

from ye N<sup>t</sup> S. 28 E 40  
S 15 E 56: S 38 E 36 to ye Gum Tree.

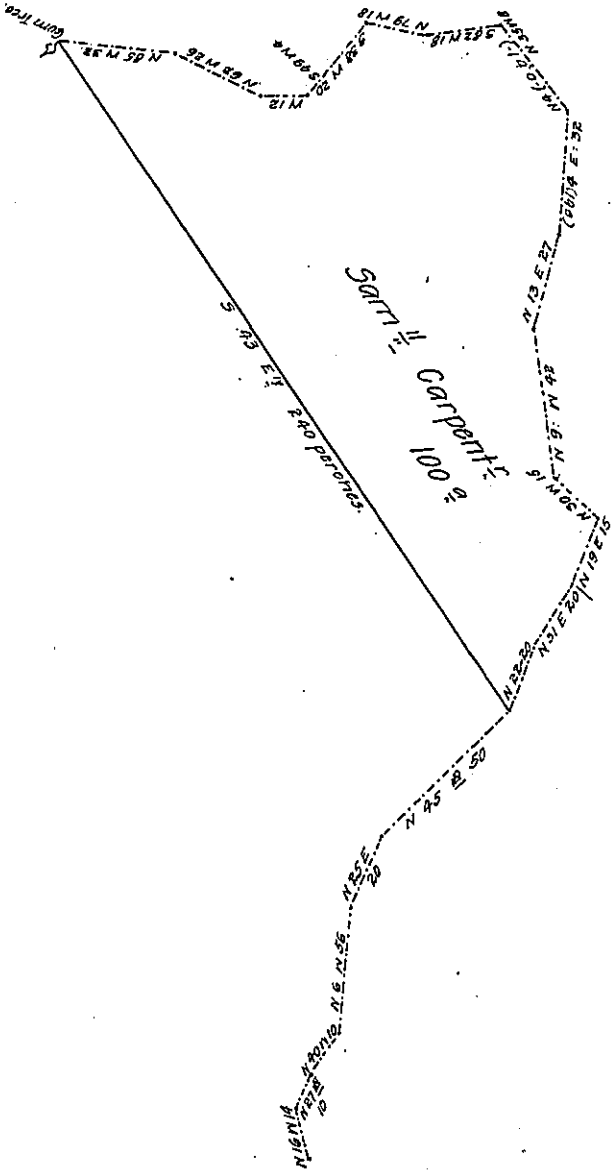
55

50

78  
15  
69

238  
68  
1904  
1488

1936  
78  
244  
1904  
1208  
1903  
186  
177



Pennsylvania

By virtue of a warrant from ye Proprietary and Govern<sup>r</sup>: Bearing date ye 23 of ye 9<sup>th</sup> mo. 1683 directed to mee I hereby certify in to his Secretarys office yt I have caused to be surveyed and set out ye 30<sup>th</sup> of ye ~~30<sup>th</sup> mo~~ 5<sup>th</sup> mo unto George Wood Purchaser a certain pece or ~~pece~~ <sup>parcel</sup> of land Scituate lying and being in ye County of Chester in ye Township of NewTown, Beginning at a corne<sup>r</sup> marked past being ye corne<sup>r</sup> tree of ye land of Richard Barsoll from thence N. E. b E. by ye said land 401 perches to a corne<sup>r</sup> marked tree from thence S. S. E by a line of marked trees 127 perches to a corne<sup>r</sup> marked tree fro<sup>(obl)</sup> thence S. W. b W. by a line of marked trees 401 perches to a corne<sup>r</sup> marked tree from thence N. N. W. by a line<sup>(obl)</sup> of marked trees 127 perches to ye first mentioned Cor<sup>(obl)</sup> past, being two hundred <sup>and</sup> <sup>five</sup> ~~thirty~~ <sup>thirty</sup> acres of land also thirty acres more lying on ye Villady or Town ~~stead~~ <sup>stead</sup>, Bounded to ye N. N. W. w<sup>th</sup> ye land of Rich<sup>d</sup> Barsoll to ye N. E. b E. w<sup>th</sup> ye land of Tho. Hood to ye S. S. E. w<sup>th</sup> ye land of John Hought to ye S. W. b W. w<sup>th</sup> ye Street or Road of ye said township. Containning in all three hundred acres.

IN TESTIMONY that the above is a copy of the original remaining on file in the Department of Internal Affairs of Pennsylvania, made conformably to an Act of Assembly approved the 16th day of February, 1833, I have hereunto set my Hand and caused the Seal of said Department to be affixed at Harrisburg, this

third day of February 1911.

Henry Aouch  
Secretary of Internal Affairs.